

MAY PATENTED SHOCK MOUNT SYSTEMS are optional equipment on all DW Collector's Series® drums and can be factory installed upon request or purchased as an aftermarket accessory. The mics can be permanently drilled into the shell or mounted via non-drill AVCs (audio vent connectors) that utilize the existing vent hole. MAY Miking Systems feature the world's most popular microphone models by the industry's leading manufacturers. Internal miking provides added isolation for those who want to control their sound.

MAY ND868BD (shown to right) with optional AVC-2



MAY Internal Drum Miking System

	Snare	Rack Tom	Floor Tom	Bass Drum	Conga
AKG					
MAY D112R/F		•	•		
MAY D112BD				•	
Audio-Technica					
MAY ATM25R/F		•	•		
Audix					
MAY D4R/F		•	•		
MAY D4BD				•	
MAY D6BD				•	
Electro-Voice					
MAY ND868R/F		•	•		
MAY ND868BD				•	
Sennheiser					
MAY 604SD/R/F	•	•	•		
MAY 604C					•
MAY 421BD				•	
MAY 609SDRF	•	•	•		
Shure					
MAY XL57SD/R/F	•	•	•		
MAY XL57BD				•	
MAY BETA52R/F		•	•		
MAY BETA52BD				•	
Shock Mounts					
MBM-1 BD Mount				•	
MBM-2 BD Shock Mount					•
AVC Audio Vent Adapter	•	•	•	•	•



IN EX Blend Module



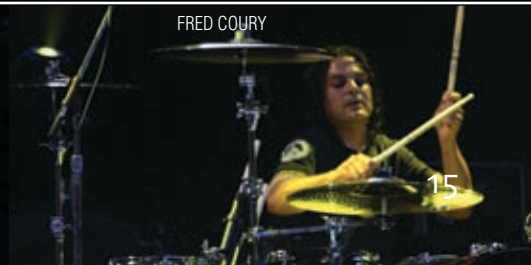
The all-new MAY IN/EX blend module is a two input, one output, high headroom, Class A microphone preamplifier designed by award-winning manufacturer PreSonus Audio. The module is designed to mix two snare microphones (one MAY internal and any external) together into one channel to achieve the ultimate snare tone for live performance and recording applications. The high-quality Class A preamps are designed to handle high SPLs delivering an open and tonally rich snare sound. Other features include microphone input gain on each channel, 48V phantom power on one input, mix control (blend), phase inversion, main output, headphone output and fast-acting analog VU meter. It's an exciting new tool to help drummers combine the best tonal characteristics of both internal and external miking.



BILLY ASHBAUGH



JASON COOPER



FRED COURY